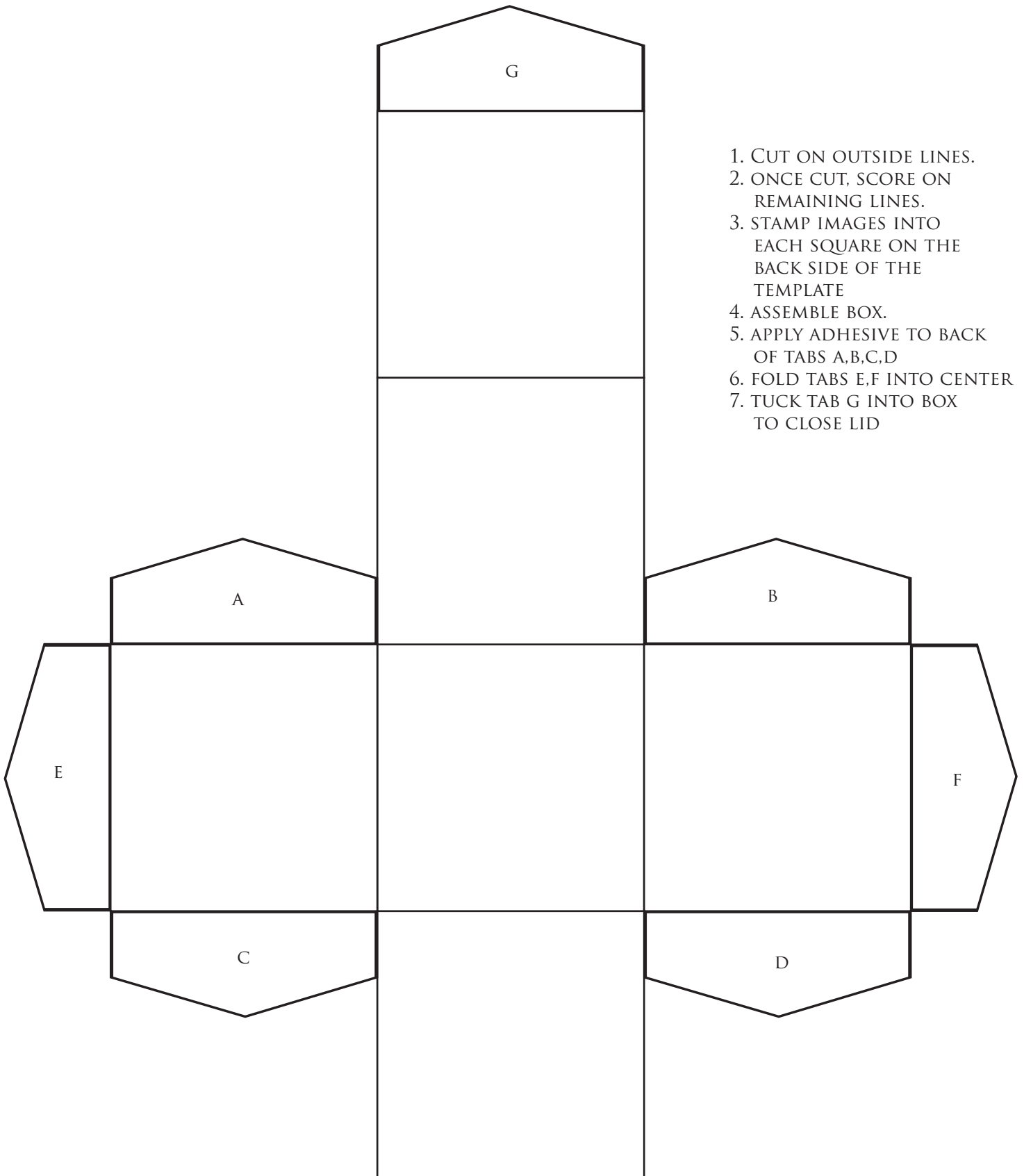


# BLOCK TEMPLATE



1. CUT ON OUTSIDE LINES.
2. ONCE CUT, SCORE ON REMAINING LINES.
3. STAMP IMAGES INTO EACH SQUARE ON THE BACK SIDE OF THE TEMPLATE
4. ASSEMBLE BOX.
5. APPLY ADHESIVE TO BACK OF TABS A,B,C,D
6. FOLD TABS E,F INTO CENTER
7. TUCK TAB G INTO BOX TO CLOSE LID